

INCH-POUND

MS27183J
 11 MARCH 1996
 SUPERSEDING
 MS27183H
 19 JUNE 1995

MILITARY SPECIFICATION SHEET
 WASHER, FLAT (ROUND, STEEL,
 CADMIUM PLATED) GENERAL PURPOSE

THIS SPECIFICATION IS APPROVED FOR USE BY ALL DEPARTMENTS
 AND AGENCIES OF THE DEPARTMENT OF DEFENSE

THE REQUIREMENTS FOR ACQUIRING THE PRODUCT DESCRIBED HEREIN SHALL CONSIST
 OF THIS SPECIFICATION SHEET AND THE ISSUE OF THE FOLLOWING DOCUMENT
 LISTED IN THAT ISSUE OF THE DEPARTMENT OF DEFENSE INDEX OF SPECIFICATIONS
 AND STANDARDS (DODISS) SPECIFIED IN THE SOLICITATION FF-W-92

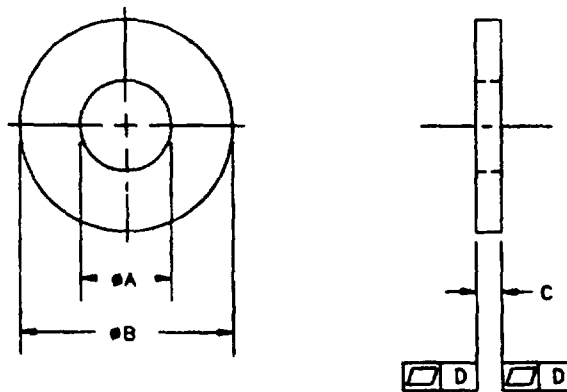


TABLE 1 DASH NUMBERS AND DIMENSIONS.

| DASH NUMBER | ϕA | TOLERANCE | | ϕB | TOLERANCE | | C THICKNESS (BASIC) | TOLERANCE | | D |
|-------------|----------|-----------|------|----------|-----------|------|---------------------|-----------|------|------|
| | | (+) | (-) | | (+) | (-) | | MAX | MIN | |
| -1 | 078 | 000 | 005 | 188 | 000 | 005 | .020 | .025 | .016 | .005 |
| -2 | .094 | 000 | 005 | 250 | .000 | 005 | .020 | .025 | .016 | .005 |
| -3 | 125 | .000 | 005 | 250 | .000 | .005 | .022 | .028 | .017 | .005 |
| -4 | 125 | 008 | 005 | 312 | 008 | 005 | .032 | .040 | .025 | .005 |
| -5 | 156 | 008 | 005 | 312 | 008 | 005 | .035 | .048 | .027 | .005 |
| -43 | 156 | 008 | .005 | .250 | .000 | 015 | .016 | .020 | .013 | .005 |
| -6 | 156 | 008 | 005 | .375 | 015 | 005 | .049 | .065 | .036 | .005 |
| -7 | 188 | 008 | .005 | .375 | .015 | .005 | .049 | .065 | .036 | .005 |
| -41 | 188 | 008 | .005 | .438 | 015 | 005 | .049 | .065 | .036 | .005 |
| -8 | .219 | .008 | 005 | .438 | .015 | .005 | .049 | .065 | .036 | .005 |
| -42 | 219 | 008 | 005 | .500 | .015 | .005 | .049 | .065 | .036 | .005 |
| -44 | 125 | 008 | .005 | .375 | .015 | .005 | .032 | .040 | .025 | .005 |
| -45 | 141 | 008 | 005 | .281 | 005 | 005 | .032 | .040 | .025 | .005 |
| -46 | 188 | .008 | .005 | .500 | .015 | 005 | .065 | .080 | .051 | .005 |
| -47 | .219 | .008 | .005 | .385 | .005 | 015 | .032 | .040 | .025 | .005 |
| -48 | 250 | 005 | .020 | .938 | 005 | 015 | .065 | .080 | .051 | .005 |
| -49 | 250 | 015 | 005 | .562 | .015 | .005 | .032 | .040 | .025 | .005 |
| -50 | 250 | 015 | 005 | .625 | 015 | 005 | .032 | .040 | .025 | .005 |
| 9 | 250 | 015 | 005 | .562 | 015 | 005 | .065 | .080 | .051 | .005 |
| -10 | 281 | 015 | .005 | .625 | 015 | 005 | .065 | .080 | .051 | .005 |

J ENTIRE DOCUMENT REVISED

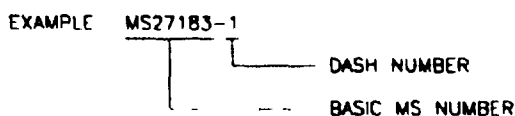
MS27183J

TABLE 1 DASH NUMBERS AND DIMENSIONS, (continued)

| DASH NUMBER | #A | TOLERANCE | | #B | TOLERANCE | | C THICKNESS (BASIC) | TOLERANCE | | D |
|-------------|-------|-----------|------|-------|-----------|------|---------------------|-----------|------|------|
| | | (+) | (-) | | (+) | (-) | | MAX | MIN | |
| -51 | 250 | 015 | 015 | 1 000 | 015 | 005 | 065 | 080 | 051 | 005 |
| -52 | 281 | 015 | 005 | 734 | 015 | 007 | 065 | 080 | 051 | 005 |
| -11 | 312 | 015 | 005 | 734 | 015 | 007 | 065 | 080 | 051 | 005 |
| -12 | 344 | 015 | 005 | 688 | 015 | 007 | 065 | 080 | 051 | 005 |
| -13 | 375 | 015 | 005 | 875 | 030 | 007 | 083 | 104 | 064 | 005 |
| -53 | 312 | 015 | 005 | 875 | 015 | 015 | 065 | 075 | 051 | 005 |
| -54 | 312 | 015 | 005 | 500 | 015 | 005 | 035 | 048 | 027 | 005 |
| -55 | 375 | 015 | 005 | 734 | 015 | 005 | 083 | 094 | 064 | 005 |
| -56 | 375 | 015 | 005 | 625 | 030 | 010 | 035 | 048 | 027 | 005 |
| -57 | 406 | 015 | 005 | 875 | 015 | 007 | 063 | 070 | 051 | 005 |
| -58 | 412 | 010 | 005 | 625 | 005 | .005 | 032 | 040 | 025 | 005 |
| -14 | 406 | 015 | 005 | 812 | 015 | 007 | 065 | 080 | 051 | 005 |
| -15 | 438 | 015 | 005 | 1 000 | 030 | 007 | 083 | 104 | 064 | 005 |
| -59 | 438 | 015 | 005 | 1 365 | 015 | 007 | 083 | 104 | 064 | 005 |
| -60 | 438 | 015 | 005 | 875 | 015 | .007 | 065 | 080 | 051 | 005 |
| -61 | 438 | .015 | 005 | 1 625 | 015 | 007 | 065 | 104 | 051 | 005 |
| -62 | 469 | 005 | 020 | 734 | 030 | 007 | 065 | 080 | 051 | 005 |
| -16 | 469 | 015 | .005 | 922 | 015 | 007 | 065 | 080 | 051 | 005 |
| -17 | 500 | 015 | 005 | 1 250 | .030 | .007 | 083 | 104 | 064 | 005 |
| -18 | 531 | 015 | 005 | 1 062 | 030 | 007 | 095 | 121 | 074 | 005 |
| -19 | 562 | 015 | 005 | 1,375 | 030 | 007 | 109 | 132 | 086 | 005 |
| -20 | 594 | 015 | 005 | 1 156 | 030 | 007 | 095 | 121 | 074 | 005 |
| -63 | 656 | 015 | 010 | 2 125 | 030 | 007 | 095 | 115 | 080 | 005 |
| -21 | 656 | 030 | 007 | 1 312 | 030 | 007 | 095 | 121 | 074 | 005 |
| -22 | 688 | 030 | 007 | 1 750 | 030 | 007 | 134 | 160 | 108 | .005 |
| -23 | 812 | .030 | 007 | 1 469 | 030 | 007 | 134 | 160 | .108 | 005 |
| -24 | 812 | 030 | 007 | 2,000 | 030 | 007 | 148 | 177 | 122 | 005 |
| -25 | 938 | .030 | 007 | 1 750 | 030 | .007 | 134 | 160 | 108 | 010 |
| -26 | 938 | 030 | 007 | 2 250 | 030 | 007 | 165 | 192 | .136 | 010 |
| -27 | 1 062 | 030 | 007 | 2 000 | .030 | 007 | 134 | 160 | 108 | 010 |
| -28 | 1 062 | 030 | 007 | 2,500 | 030 | 007 | 165 | 192 | 136 | 010 |
| -29 | 1,250 | 030 | 007 | 2 750 | 030 | .007 | .165 | .192 | 136 | .010 |
| -30 | 1,375 | .030 | .007 | 3,000 | .030 | 007 | 165 | 192 | .136 | 010 |
| -31 | 1,500 | .045 | .010 | 3 250 | .045 | .010 | 180 | 213 | .153 | 010 |
| -32 | 1 625 | 045 | 010 | 3,500 | 045 | 010 | 180 | .213 | 153 | 010 |
| -33 | 1 750 | 045 | 010 | 3,750 | 045 | 010 | 180 | .213 | 153 | 010 |
| -34 | 1 875 | 045 | .010 | 4,000 | .045 | 010 | .180 | .213 | .153 | .010 |
| -35 | 2,000 | .045 | 010 | 4 250 | .045 | .010 | 180 | .213 | 153 | 010 |
| -36 | 2 125 | 045 | 010 | 4 500 | 045 | .010 | 180 | 213 | 153 | 010 |
| -37 | 2 375 | 045 | 010 | 4 750 | 045 | 010 | .220 | .248 | 193 | 010 |
| -38 | 2,625 | 045 | 010 | 5,000 | 045 | 010 | 238 | 280 | .210 | 010 |
| -39 | 2 875 | 065 | 010 | 5 250 | 065 | 010 | .259 | 310 | 228 | .010 |
| -40 | 3 125 | .065 | 010 | 5 500 | 065 | 010 | 284 | 327 | 249 | 010 |

REQUIREMENTS

- MATERIAL. STEEL, CARBON GRADES 1005 THRU 1020 (UNS G10050 THRU UNS G10200), IN ACCORDANCE WITH ASTM A108, ASTM A109 OR ASTM A569, ANY TEMPER
- PROTECTIVE COATING AND SURFACE TREATMENT. CADMIUM PLATE IN ACCORDANCE WITH QQ-P-416, TYPE II, CLASS 3
- SURFACE TEXTURE. BEARING SURFACE ROUGHNESS SHALL NOT EXCEED 125 MICRONS (Ra) IN ACCORDANCE WITH ANSI/ASME B46.1
- PART NUMBER. THE PART NUMBER SHALL CONSIST OF THE BASIC MS NUMBER FOLLOWED BY A DASH NUMBER FROM TABLE 1



MS27183 J INDICATES WASHER FLAT (ROUND STEEL CADMIUM PLATED) INSIDE DIAMETER 078, OUTSIDE DIAMETER 188, THICKNESS 020

NOTES

- 1 ALL DIMENSIONS ARE IN INCHES
- 2 IN THE EVENT OF A CONFLICT BETWEEN THE TEXT OF THIS DOCUMENT AND THE REFERENCES CITED HEREIN, THE TEXT OF THIS DOCUMENT SHALL TAKE PRECEDENCE
- 3 UNLESS OTHERWISE SPECIFIED, ISSUE OF REFERENCED DOCUMENTS ARE THOSE IN EFFECT AT THE TIME OF SOLICITATION

CADMIUM OR ZINC COATED STEEL WASHERS ONLY, PREVIOUSLY SPECIFIED ON MS15795 WERE CANCELLED AND SUPERSEDED BY CADMIUM PLATED STEEL WASHERS SPECIFIED HEREIN

UNCOATED STEEL WASHERS AND PHOSPHATE COATED STEEL WASHERS, COVERED BY DASH NUMBERS GIVEN ON MS15795, ARE CANCELLED/INACTIVATED AFTER THE INDICATED APPROVAL DATE FOR REVISION A OF SUPERSEDING STANDARD MS27183 USE THE DASH NUMBERS GIVEN IN THE PRECEDING SHEET OF THIS STANDARD THE CANCELLED WASHERS CAN NOT ALWAYS REPLACE THE NEW WASHERS AND SHOULD BE USED UNTIL EXISTING STOCK IS DEPLETED THEN USE ONLY THE NEW WASHERS FOR DESIGN AND REPLACEMENT REPLACEMENT SHALL BE IN ACCORDANCE WITH THIS TABLE

TABLE II INTERCHANGEABILITY

| PART NUMBERS | | | | PART NUMBERS | | | |
|--------------|-------------|-------------|-----------|--------------|-------------|-------------|------------|
| CANCELLED | | | NEW | CANCELLED | | | NEW |
| UNCOATED | PHOSPHATE | CAD or ZN | CADMIUM | UNCOATED | PHOSPHATE | CAD or ZN | CADMIUM |
| MS15795-1 | MS15795-101 | MS15795-201 | MS27183-1 | MS15795-21 | MS15795-121 | MS15795-221 | MS27183-22 |
| -2 | -102 | -202 | -2 | -22 | -122 | -222 | -23 |
| -3 | -103 | -203 | -3 | -23 | -123 | -223 | -24 |
| -4 | -104 | -204 | -4 | -24 | -124 | -224 | -25 |
| -5 | -105 | -205 | -5 | -25 | -125 | -225 | -26 |
| -6 | -106 | -206 | -6 | -26 | -126 | -226 | -27 |
| -7 | -107 | -207 | -7 | -27 | -127 | -227 | -28 |
| -8 | -108 | -208 | -8 | -28 | -128 | -228 | -29 |
| -9 | -109 | -209 | -9 | -29 | -129 | -229 | -30 |
| -10 | -110 | -210 | -10 | -30 | -130 | -230 | -31 |
| -11 | -111 | -211 | -11 | -31 | -131 | -231 | -32 |
| -12 | -112 | -212 | -12 | -32 | -132 | -232 | -33 |
| -13 | -113 | -213 | -13 | -33 | -133 | -233 | -34 |
| -14 | -114 | -214 | -14 | -34 | -134 | -234 | -35 |
| -15 | -115 | -215 | -15 | -35 | -135 | -235 | -36 |
| -16 | -116 | -216 | -16 | -36 | -136 | -236 | -37 |
| -17 | -117 | -217 | -17 | -37 | -137 | -237 | -38 |
| -18 | -118 | -218 | -18 | -38 | -138 | -238 | -39 |
| -19 | -119 | -219 | -19 | -39 | -139 | -239 | -40 |
| -20 | -120 | -220 | -21 | -40 | -140 | | -20 |

MILITARY INTERESTS

CUSTODIANS

ARMY - AR
NAVY - OS
AIR FORCE - 82

REVIEWER

ARMY - AV FR MI
NAVY - AS SH MC
NATIONAL SECURITY AGENCIES - N

PREPARING ACTIVITY

DLA-15

(PROJECT 5310-2210)